

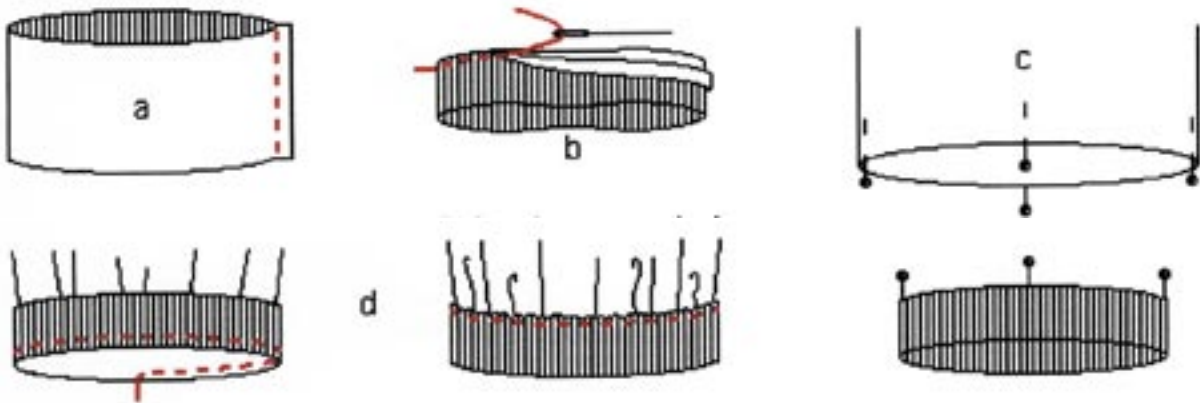
MEN'S RAGLAN JACKET

WRISTBAND OR CUFFS, COLLAR AND ZIP

WRISTBANDS

This is how you attach wristbands in rib knit fabric.

- Join the ribbing to a loop, right sides together. Press the seam allowances open.
- Fold the ribbing wrong sides together and baste (hand sew) edges together.

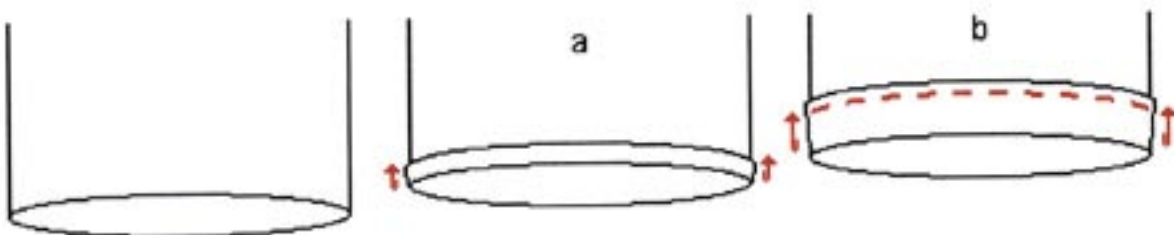


- Divide ribbing and sleeve into four equal parts and mark with pins.
- Lightly stretch ribbing and sew to sleeve, finish seams together and press up.

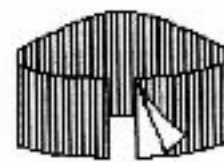
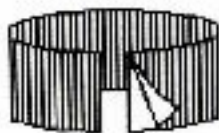
CUFFS

This is how you make a cuff without ribbed wristband.

- Fold up a small edge of around 1 cm and press.
- Fold up a larger edge, around 1,5-2 cm press and sew.

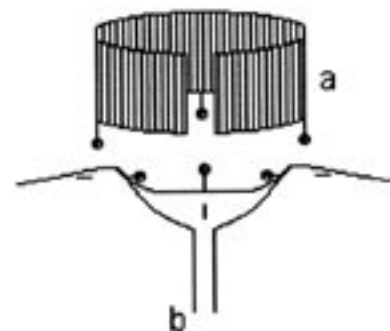


NORMAL RIBBED COLLAR



HIGH BACK RIBBED COLLAR

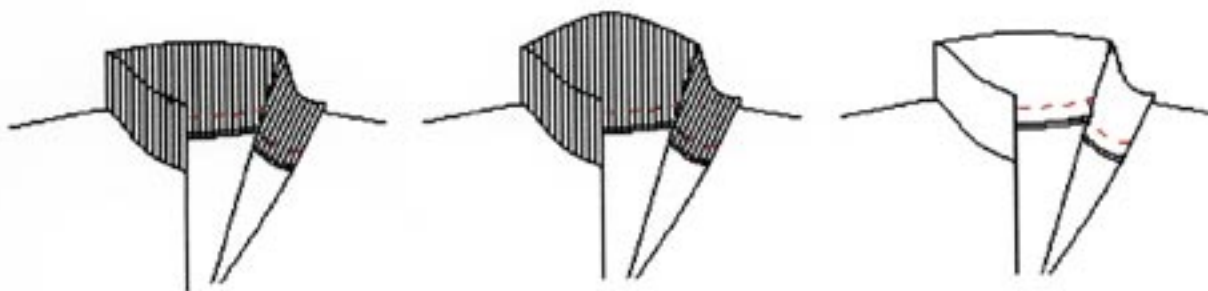
NORMAL NON-RIBBED COLLAR



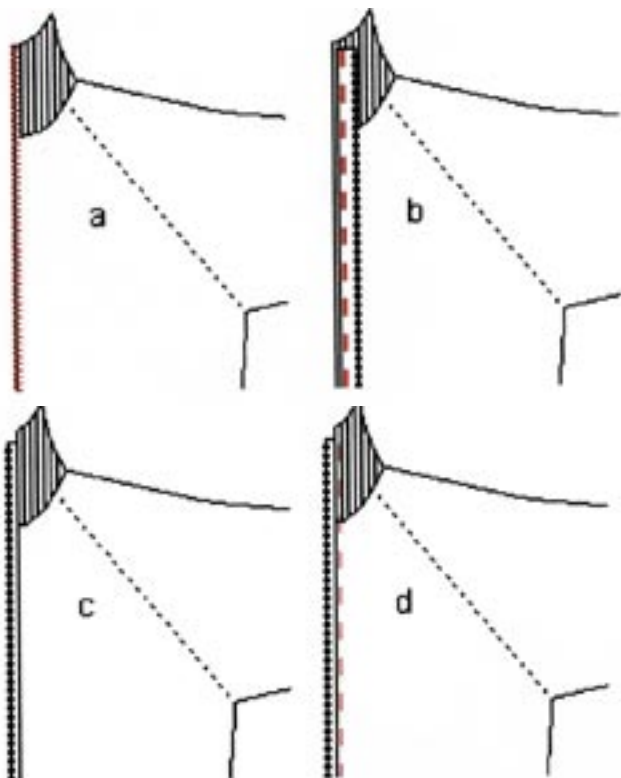
COLLAR

You use the same method to attach all three types of collar, but you will not need to stretch the non-ribbed collar.

- a) Press collar wrong sides together, mark shoulder seams and centre back with pins.
- b) Pin collar to neckline, right sides together, lightly stretch and join making sure that marked points meet. Press down towards body.



ZIP



Attaching the zip.

- a) Over-lock the front edges before attaching the zip.
- b) Lay the zip, with its front side facing the front side of the jacket, and with its teeth pointing towards the sleeve, sew allowing a little seam allowance.
- c) Fold out the zip so the teeth are facing the right direction. Press the seam into the body.
- d) Top stitch on the front side of the jacket, close to where the zip and the fabric meet.

The sewing instructions for the men's raglan jacket include:

- instructions for cutting out the pattern,
- how to sew the different backs,
- how to sew the sleeves and attach them to the body of the jacket,
- sewing wristband or sleeve cuff, attaching collar and inserting zip,
- lining the hem.