

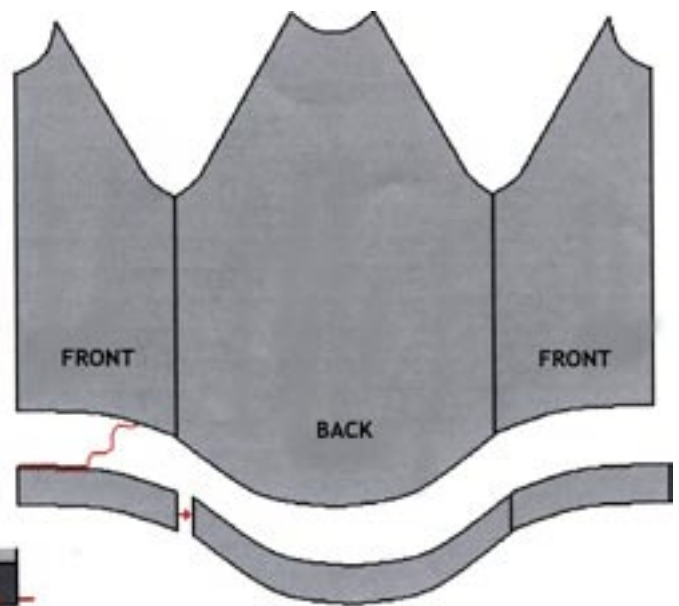
# WOMEN'S JACKET - SUIT STYLE

## HEM WITH FACING

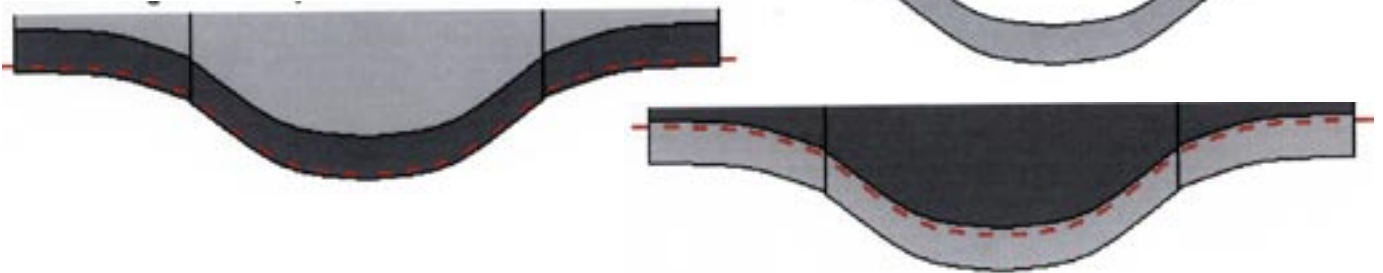
### HEM WITH FACING

You attach a narrow piece of facing along the bottom hem of the jacket to make a smooth and good-looking ending.

■ FABRIC WRONG SIDE    ■ FABRIC RIGHT SIDE



a) Join hem facing pieces together and overlock the top edge.



b) With right sides facing each other, join the facing to the jacket along the bottom edge.  
 c) Fold the facing to the inside of the jacket and press edge well, sew up facing.

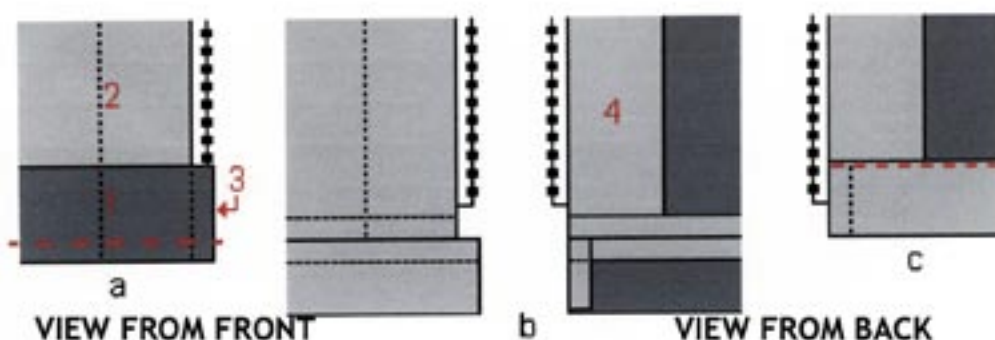
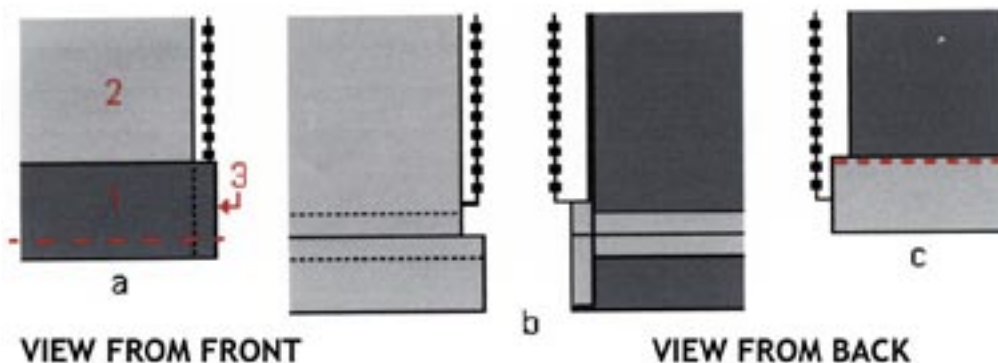
....

## ZIP DETAIL

Sew the zip to a hem without facing like this.

- With right sides facing sew the hem facing to the jacket, making sure the seam allowance sits over the zip a little.
- Open up and fold the seam allowance in. Then fold the hem facing up into the inside of the jacket.
- Sew up the hem.

- 1 - hem facing
- 2 - jacket
- 3 - side seam allowance
- 4 - front facing



Sew the zip to a hem with facing like this:

- With right sides facing, sew hem facing to the jacket. Make sure the seam allowance sits over the zip and the front facing sits flat while being sewn over.
- Open up and fold the side seam allowance in. Then fold hem facing up into the inside of the jacket. Press the seam.
- Sew up the hem again, making sure the front facing sits flat.

The sewing instructions for the women's suit style jacket include:

- instructions for cutting out the pattern,
- how to sew the different backs,
- how to sew the sleeves and attach them to the body of the jacket,
- sewing wristband or sleeve cuff, attaching collar and inserting zip (without facing),
- sewing wristband or sleeve cuff, attaching collar and inserting zip (with facing)
- lining the hem.