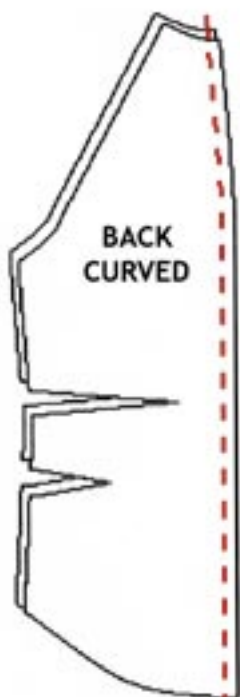
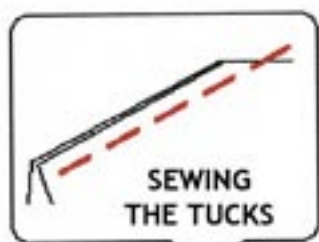
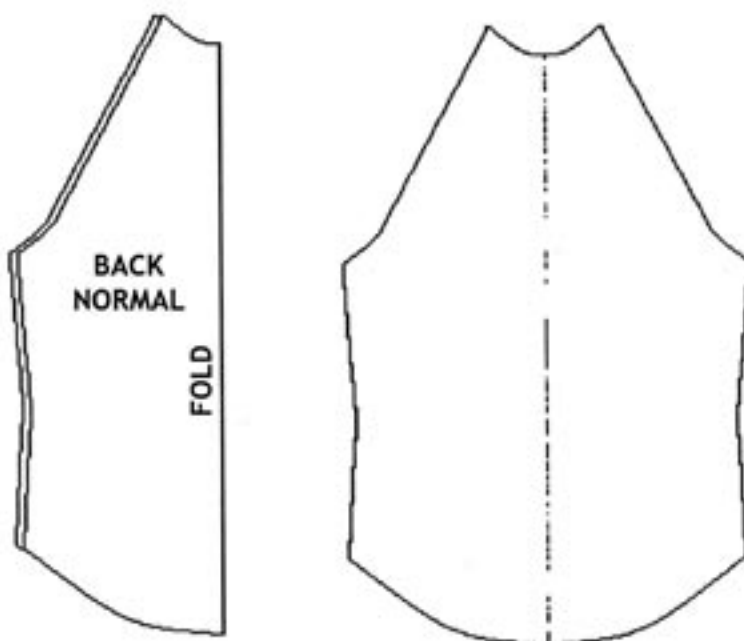


MEN'S JACKET- SUIT STYLE

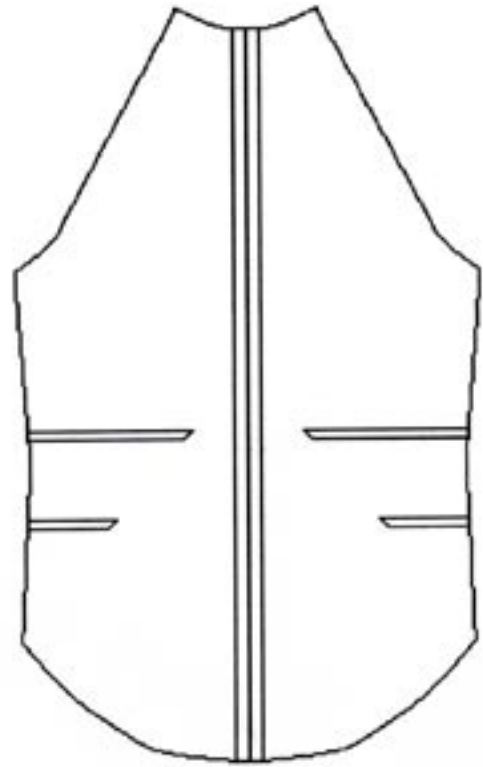
SEWING THE DIFFERENT BACKS

Depending on which back you decided upon you may have to do some sewing before you can continue. If you selected the normal back, then it needs no further work.



If you selected the curved back then you will need to join the back seam and sew the tucks. Sew the tucks and back seam, finish off the seam allowance (over lock or zigzag stitch).

Press the back seam open and the tucks downwards.



The sewing instructions for the men's suit style jacket include:

- instructions for cutting out the pattern,
- how to sew the different backs,
- how to sew the sleeves and attach them to the body of the jacket,
- sewing wristband or sleeve cuff, attaching collar and inserting zip (without facing),
- sewing wristband or sleeve cuff, attaching collar and inserting zip (with facing)
- lining the hem.